



MODEL ECO 10

BARKMET SHIPYARD

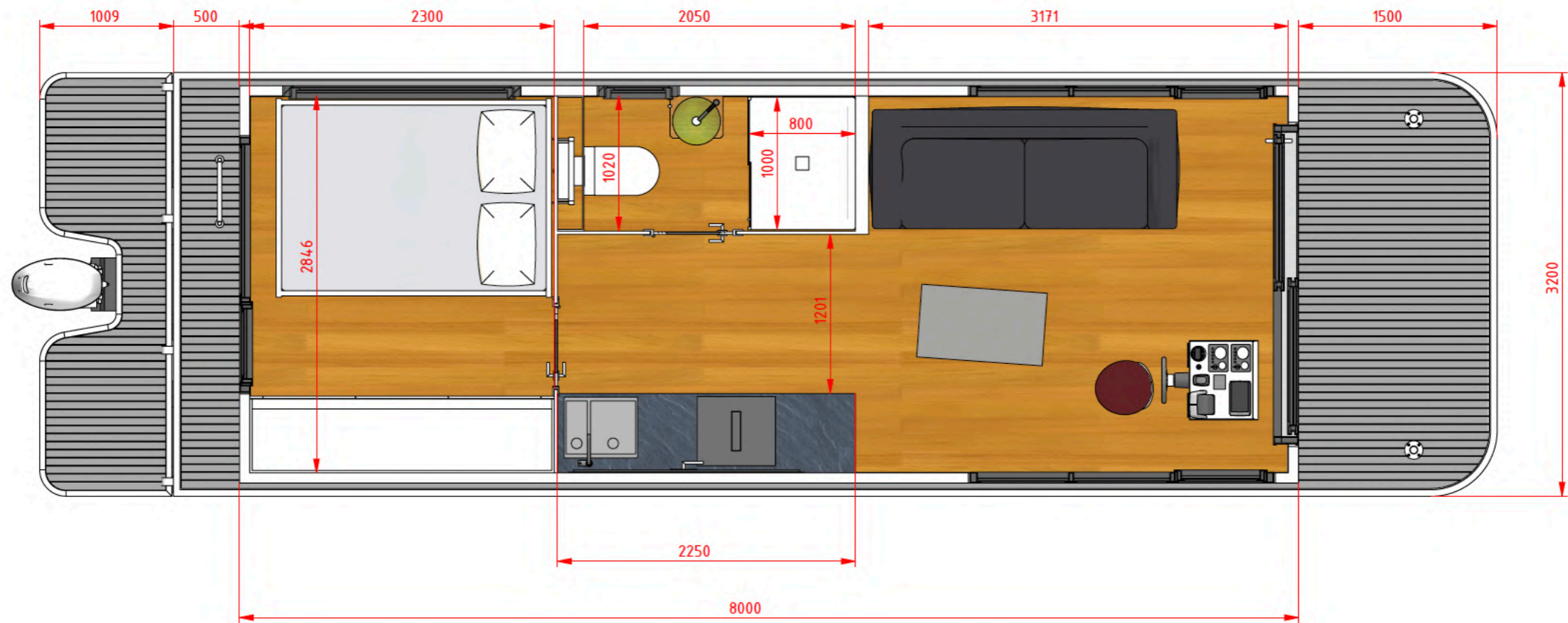
Specifications:

- Length: approx. 10 m
- Width: approx. 3.2 m (Slight size modifications possible)
- Usable area: approx. 23.2 m²
- Roof terrace: approx. 24.8 m² (Walkable)
- Hull: Plastic pontoon
- Motor: Optional electric outboard or diesel engine
- Steering position: outside and inside options
- Completion: Production 4 months from order
- Layout: Living room kitchen corner, 1x bedroom, bathroom with toilet and shower, optionally a bedroom as a sauna

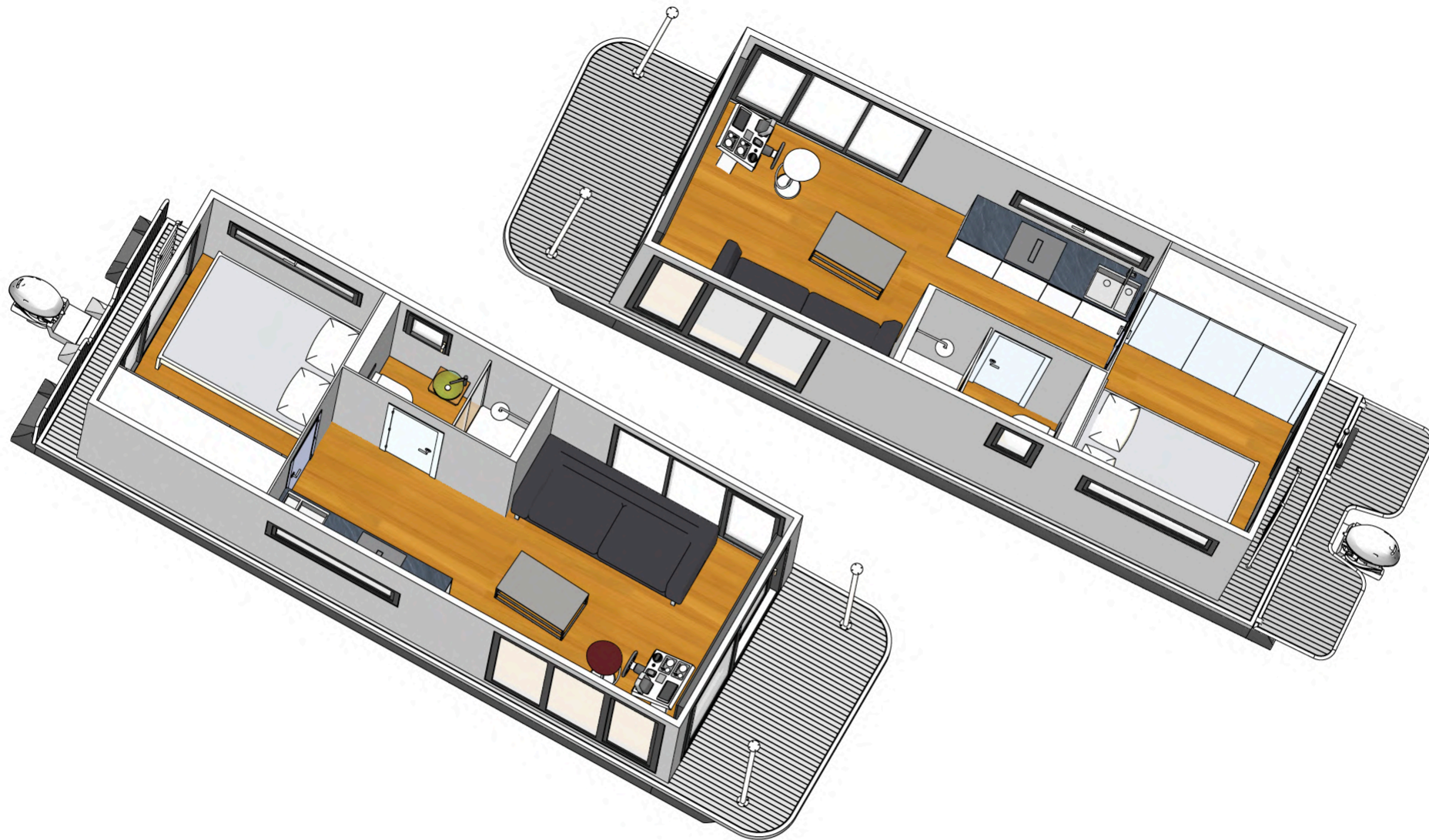
ECO 10



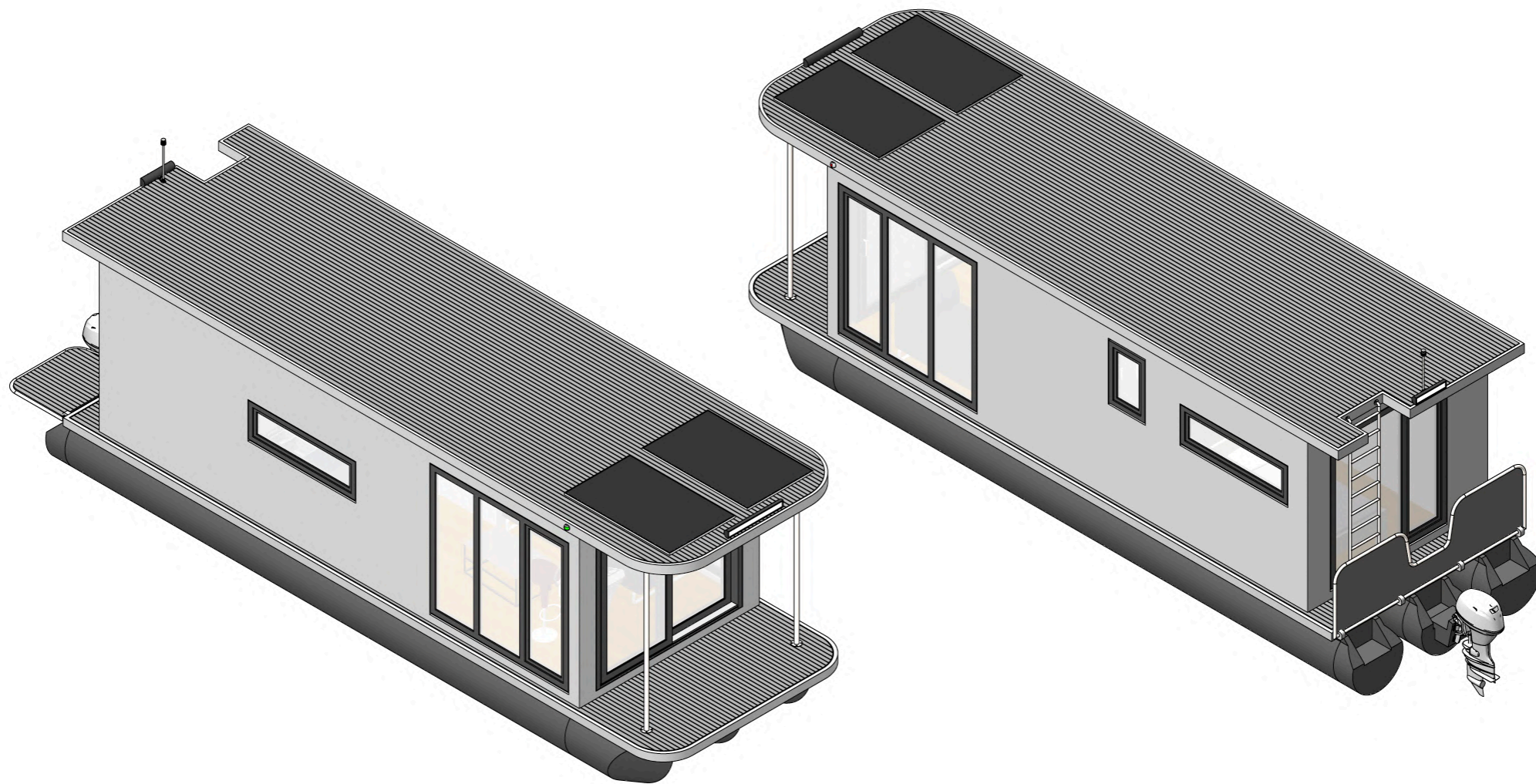
Room layout example



General View Example



General View Example



ECO 10

Base Model equipment:

- Kitchen corner including induction cooker, refrigerator with freezer compartment
- Fully equipped bathroom (toilet, sink, shower)
- Complete house electrical system
- Complete door set (including interior doors)
- Ladder to the roof
- Technical equipment (batteries, sensors...)
- Water tank system (500 l + 500 l waste)
- Stainless steel railing (top and bottom)
- Control console
- Complete lighting system (inside and outside) including ambient lighting
- Fender

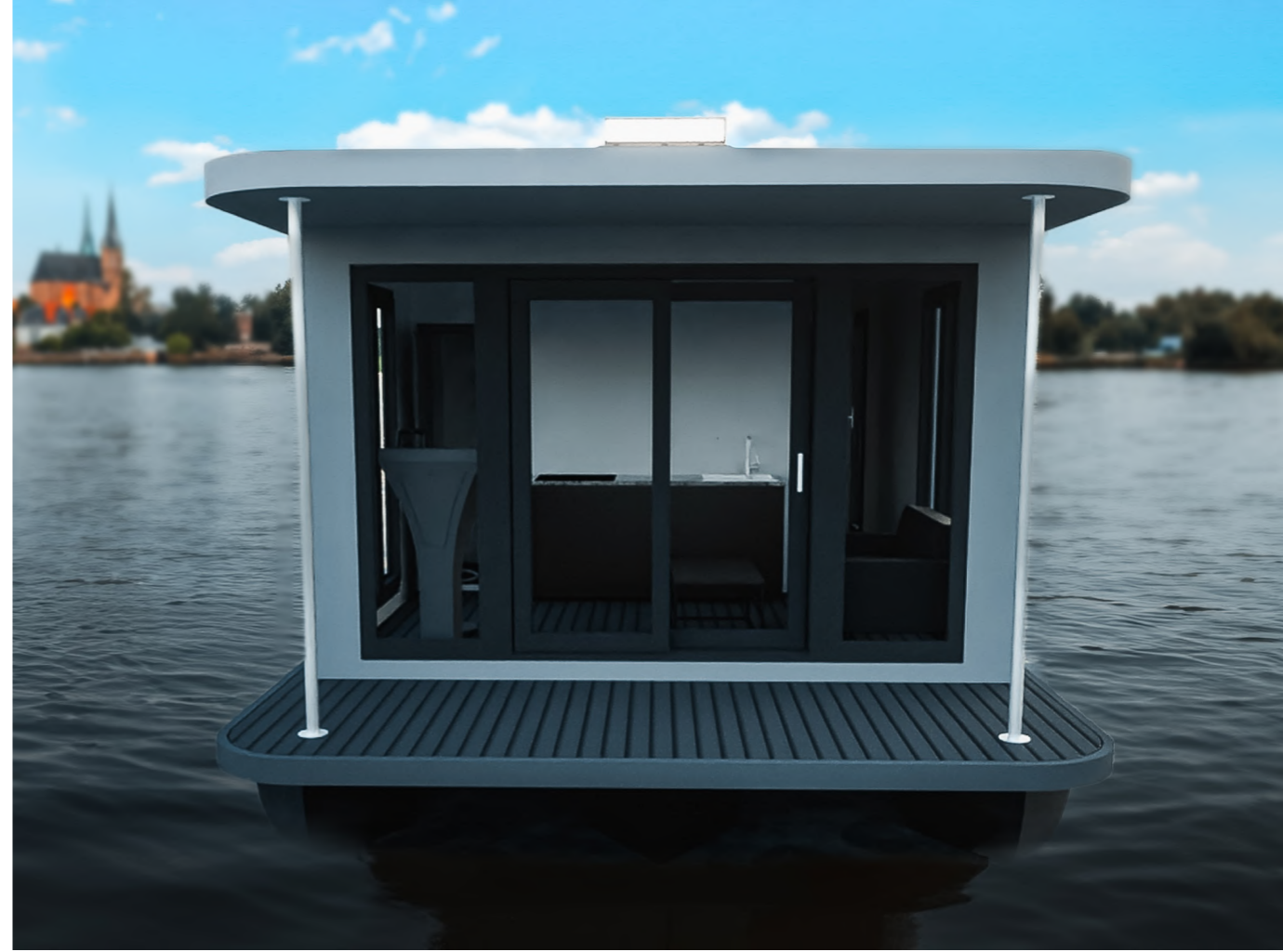
Total price

106.090€ ex. TAX and transportation

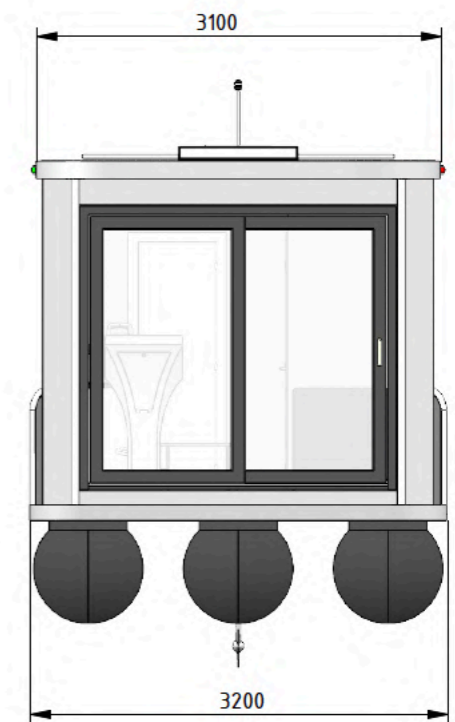
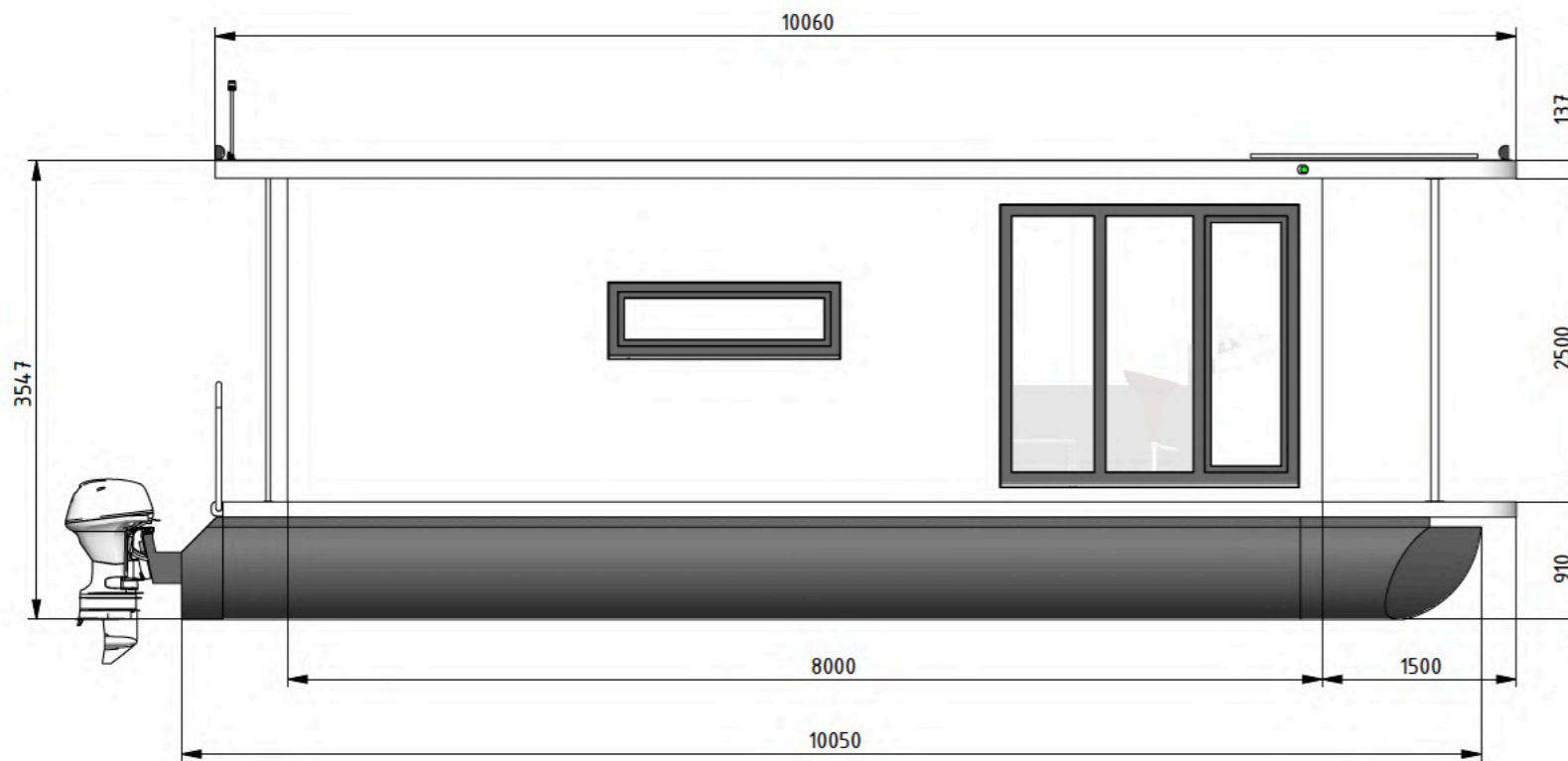
Available also in 12m variant



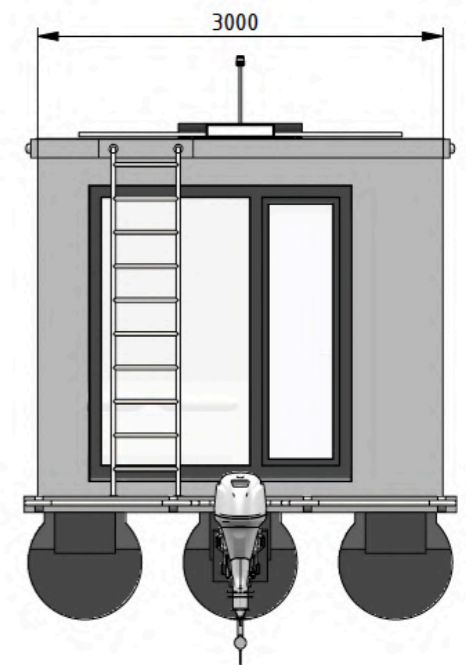
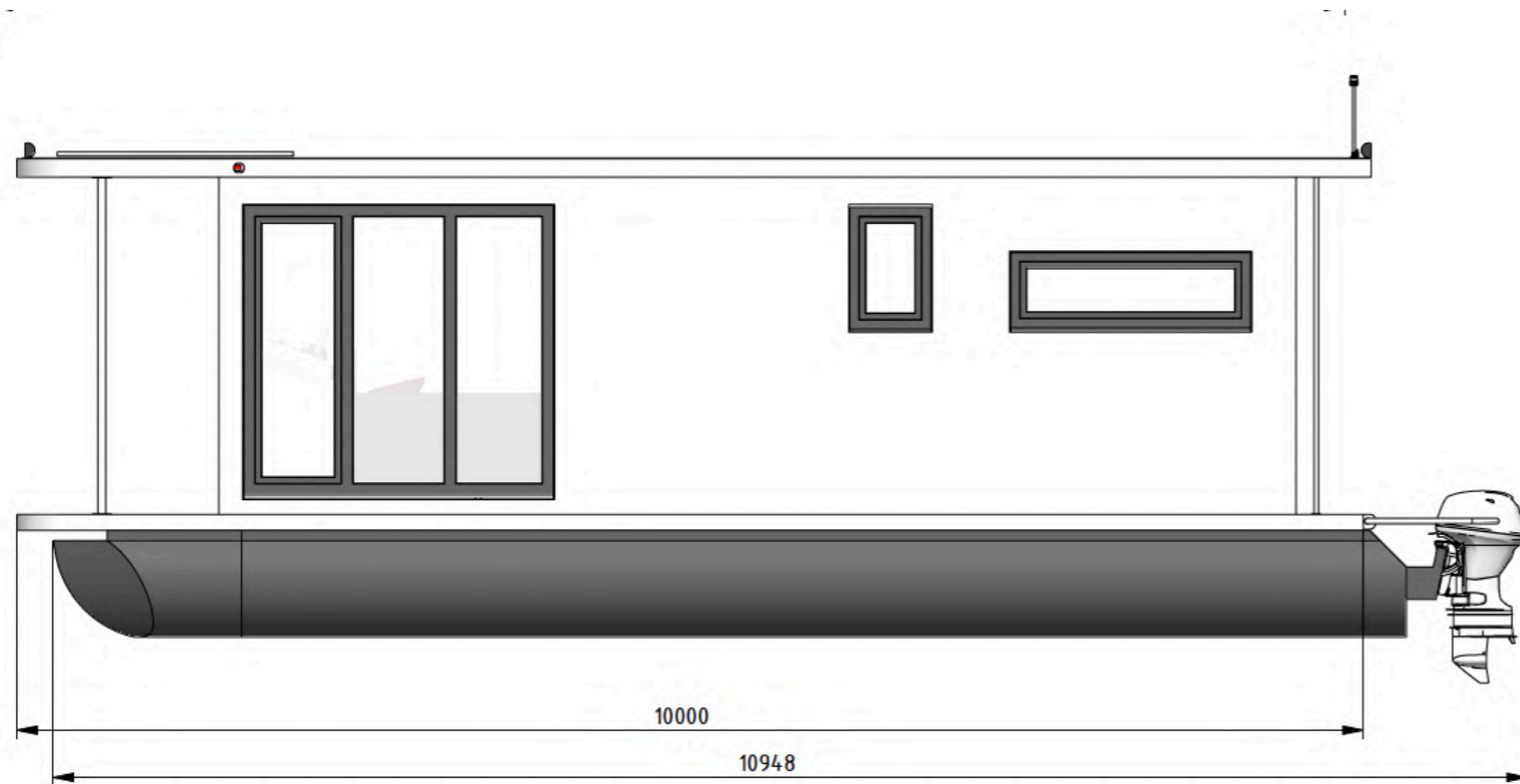
***“Be more at ease and
let the time pass slowly”***



Side view + Front view



Side view + Back view



Motorisation

- E-Tech 10 POD Outboard Motor - 10kW/48V
- Sealed charger (IP67) - 48V, 35A (2000W)
- LiFePO4 25,6V 120Ah
- 15"-16" 3-blade manganese bronze propeller
- **Steering system**
- Box for rotary steering system
- T67 Cabel M58 18'
- SS steering wheel black 400 mm
- Terminal A73
- **Installation**

Total Price: 34.304€ ex. TAX

As an alternative fuel outboard motor 60 HP for 13.340€



Examples of our floating homes



Examples of our floating homes





Contact:

- Phone: +420 722 454 727
- Mail: mtz@barkmet.cz

More photos and videos at: barkmet-boats.com